



GAT MONTHLY MEMBERSHIP PROGRESS REPORT

Results as of: 6/30/2023

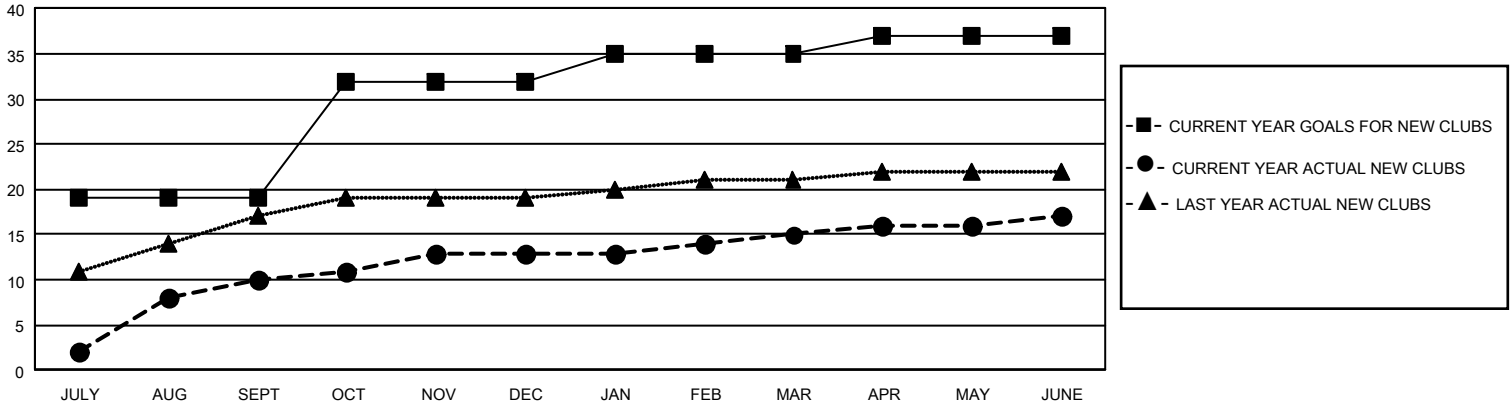
GAT Constitutional Area 5 - MD 300 Taiwan

REPORT DOES NOT INCLUDE CLUBS IN UNDISTRICTED AREAS.

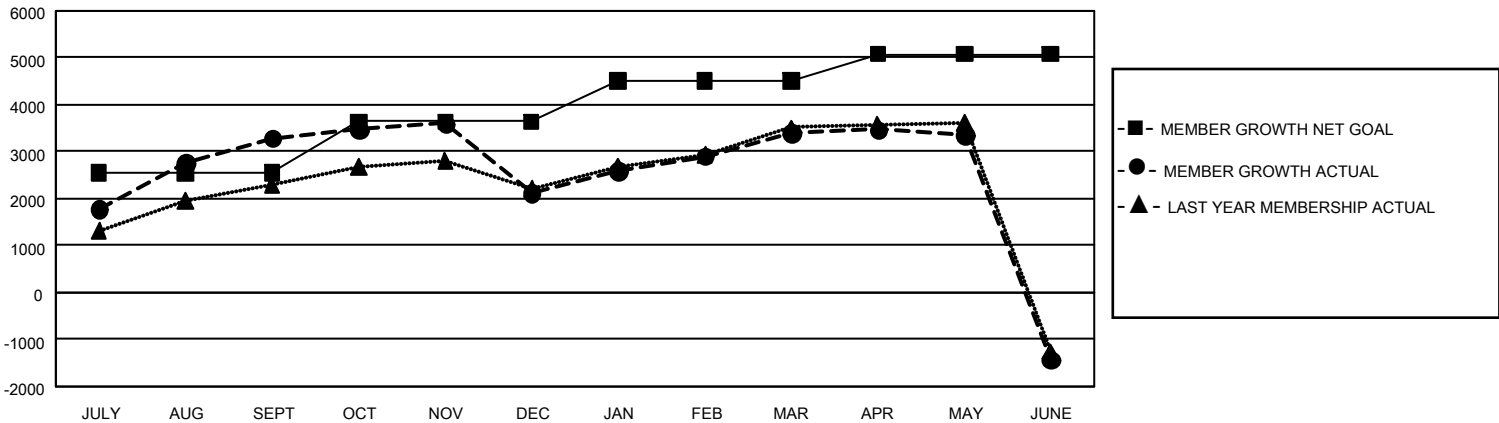
Clubs			
RESULTS FOR 2022-2023			
QUARTER	NEW CLUB GOAL	NEW CLUBS	DROPPED CLUBS
JULY/AUG/SEPT	57	10	8
OCT/NOV/DEC	39	3	4
JAN/FEB/MAR	9	2	4
APR/MAY/JUNE	6	2	8

Members			
RESULTS FOR 2022-2023			
QUARTER	MEMBER GROWTH NET GOAL	MEMBER GROWTH ACTUAL	DROPPED MEMBERS ACTUAL (including transfers)
JULY/AUG/SEPT	2540	4,533	896
OCT/NOV/DEC	1100	826	1,853
JAN/FEB/MAR	864	1,654	213
APR/MAY/JUNE	573	366	5,086

GOALS AND ACTUAL NEW CLUBS CUMULATIVE



GOALS AND ACTUAL MEMBERS CUMULATIVE



DROPPED CLUBS: 24	
DROPPED MEMBERS	
DECEASED	147
CLUB CANCELLED	38
OTHER	7,863
TOTAL	8,048

985 CLUBS OF 1,118 ADDED 1 OR MORE NEW MEMBERS

[CLICK HERE FOR CUMULATIVE MEMBERSHIP DATA](#)

GENDER DISTRIBUTION	
MALE	24,954 (66.60%)
FEMALE	12,506 (33.38%)
NON BINARY	0 (0.00%)
PREFER NOT TO ANSWER	11 (0.03%)
TOTAL FAMILY UNIT MEMBERS	6,592
FAMILY MEMBERS PAYING HALF DUES	3,995